



HOPEWELL CEREMONIAL EARTHWORKS

Answers Guide

A tool to help you answer guest questions about the eight sites within the Hopewell Ceremonial Earthworks group.

September 2023



WHAT IS WORLD HERITAGE INSCRIPTION?

It's a big deal. The **world's most important places** are recognized by UNESCO's World Heritage program. Sites selected for the World Heritage List represent the **"best of the best"** of cultural and natural places. Prior to the vote in September, there were 1,157 World Heritage properties in the world, including 24 in the United States. World Heritage sites include Stonehenge, Tower of London, Great Wall of China, Acropolis of Athens, Taj Mahal, Grand Canyon and others incredible places. Hopewell Ceremonial Earthworks is Ohio's first World Heritage site and the nation's 25th.

WHAT ARE THE HOPEWELL CEREMONIAL EARTHWORKS?

Hopewell Ceremonial Earthworks is the name of the World Heritage collection of **eight earthwork sites in southern and central Ohio. These sites were built by Early Native Americans 2,000 to 1,600 years ago (1-400 CE)** as gathering places for sacred ceremonies and burials. What we know is learned from what these people left behind, such as artifacts and the earthwork sites themselves, enormous complexes of earthen walls and mounds.

While cathedrals built up toward the sky, those who constructed the sacred Hopewell Ceremonial Earthworks built out across the landscape. **Most sites are enclosed by earthen walls, many of which are near-perfect octagons, circles and squares.**

Within these geometric borders are **mounds, which were once wooden structures for gathering, burials or ceremony.** Once a structure's use was considered complete, the ancient ones broke the artifacts and the structures and covered them with layers of clay, sand, gravel and dirt creating the mounds and signifying closure.

WHY ARE HOPEWELL CEREMONIAL EARTHWORKS WORTHY AS A WORLD HERITAGE SITE?

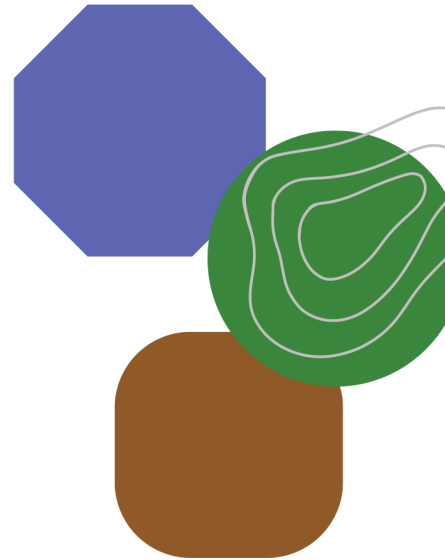
The Hopewell Ceremonial Earthworks have worldwide value and are amazing examples of man's creativity and brilliance. They are the **largest set of geometric and monumental earthworks in the world.**

These sites help us better understand the ancestors of today's Native American tribes. They were built across many generations using tools made of animal bones and baskets. The sites were **important gathering places** for Early Native American societies scattered throughout North America.

It was to these places that people traveled near and far. **It is thought they came to feast, to participate in burials and to take part in sacred and ceremonial activities.** We know this because artifacts have been found at the sites that are made from materials not naturally found in the Ohio Valley, including marine shells from the Gulf of Mexico.

To construct these earthen monuments, these builders had **incredible skills in geometry and astronomy.** Near-perfect circles, squares and octagons are repeated at sites within an area encompassing hundreds of square miles.

Many of the sites are **aligned to the cycles of the sun and the moon.** These ancient builders observed and recorded movements in the sky over long periods of time (18.6 years in the case of the moon cycle). With this deep understanding of astronomical movements, they built sites where structures are perfectly aligned to astronomical events, such as the solstices.



LEARN MORE

hopewellearthworks.org

Created for those working in Ohio's travel industry by the following:



visitchillicotheohio.com



EXPLORE
LICKING COUNTY
FIND YOUR WAY



Ohio Travel
ASSOCIATION

WHAT SITES ARE INCLUDED?

Spread out over hundreds of square miles, the Hopewell Ceremonial Earthworks structures have great similarities. They were built across multiple generations and across the Ohio landscape, yet the **octagons, squares and circles are incredibly similar in dimension.** Today, we tend to view them as different sites, but collectively, these sites create preserved portions of a **collection of earthworks that were built during the same time period, using consistent and precise methods and serving similar purposes.**

Eight sites are part of the Hopewell Ceremonial Earthworks World Heritage collection:

Fort Ancient Earthworks and Nature Preserve in Oregonia - see page 4

Hopewell Culture National Historical Park in Chillicothe includes the following earthwork sites. Visitors must drive to each site)

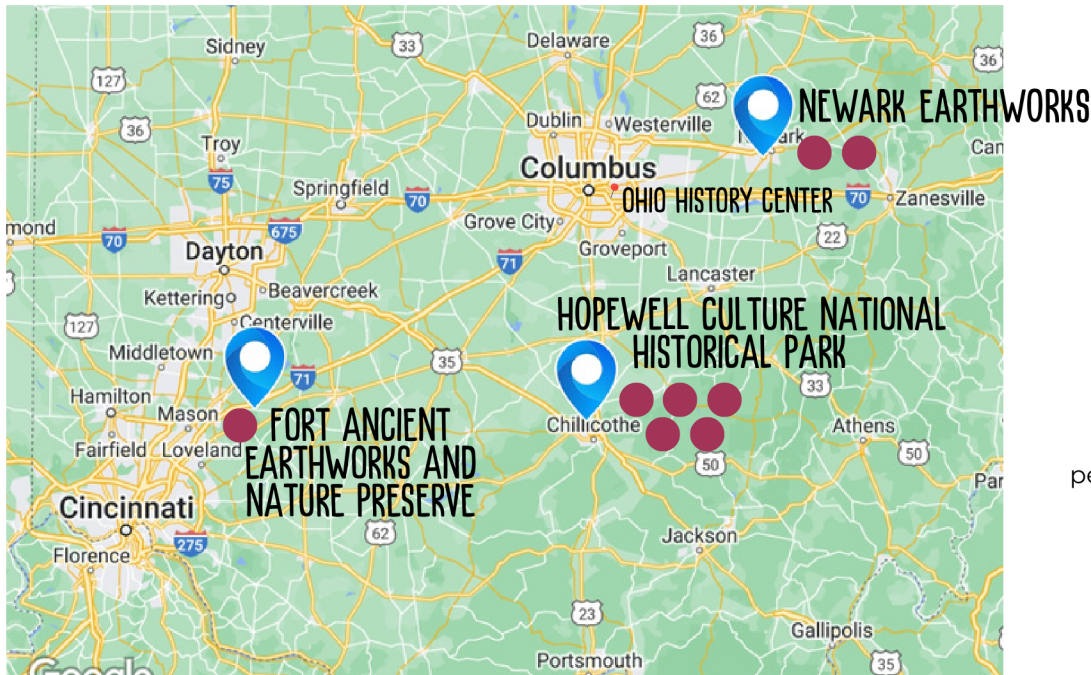
- **Mound City Group** (Highly recommended as starting point for this collection of sites as it is the park's headquarters) - see page 5
- **Hopewell Mound Group** - see page 6
- **Seip Earthworks** - see page 7
- **Hopeton Earthworks** - see page 8
- **High Bank Works** (not open to visitors)

Newark Earthworks includes two sites in Newark and Heath. Visitors must drive to each site.)

- **Newark Earthworks State Memorial (Great Circle Earthworks)** - (Highly recommended as starting point for the Newark collection of sites) - see page 9
- **Octagon Earthworks** - see page 10

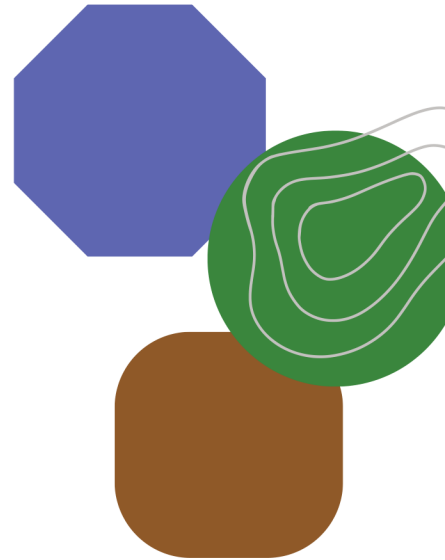
Visitors may also want to check out the Ohio History Connection's exhibit - *Indigenous Wonders of Our World: Hopewell Ceremonial Earthworks.* We've included this site in the Answers Guide and map below.

Ohio History Center - see page 11



WHY ISN'T SERPENT MOUND INCLUDED?

Serpent Mound was built during a different time period by Native Americans of a different culture. Serpent Mound is in an early stage of being nominated to the World Heritage List.





The following pages provide important visitor information about each of these eight sites, including address, hours, fees, restroom availability, etc.

WHAT ARE MUST-SEE SITES FOR VISITORS?

Visitors may have limited time. They also may be traveling with young children or those with accessibility issues. Not every site has staffing on-site or a visitors center. Others require a lot of walking on unpaved trails in order to access.

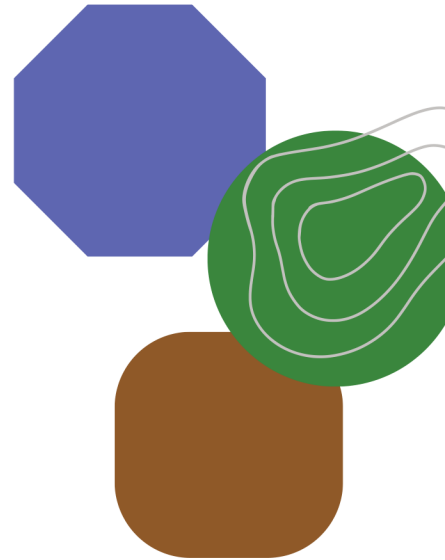
Each of the sites are incredible, and this list does not attempt to rank their importance. The tables below focus on the visitor experience to ensure all guests have an exceptional visit.

Fort Ancient Earthworks and Nature Preserve in Oregonia - see page 4	
Mound City Group (part of Hopewell Culture National Historical Park) - see page 5	
Newark Earthworks State Memorial (Great Circle Earthworks) - see page 9	

NO VISITORS CENTER, NOT STAFFED, LIMITED ACCESSIBILITY, BUT IMPRESSIVE EARTHWORKS CAN BE VIEWED FROM VEHICLE	
Seip Earthworks (part of Hopewell Culture National Historical Park) - see page 7	
Octagon Earthworks (part of Newark Earthworks group) - see page 10	

MORE DIFFICULT TO ACCESS, EARTHWORKS ARE HARDER TO SEE WITH UNTRAINED EYE, NO STAFFING	
Hopewell Mound Group (part of Hopewell Culture National Historical Park) - see page 6	
Hopeton Earthworks (part of Hopewell Culture National Historical Park) - see page 8	

NOT OPEN TO THE PUBLIC	
High Bank Works (part of Hopewell Culture National Historical Park) - no additional visitor information is provided, as site is being used as an archaeology research site and is not open to the public.	



NOTE ON ACCESSIBILITY

These sites were built close to 2,000 years ago, covering vast acreage of what ancient builders and their Native American descendants deem sacred ground. While some sites have paved paths leading up to the earthworks, none have paved paths within the sacred complexes themselves. Accessible visitor centers are marked on the table. Visitors with specific needs should be advised to call ahead to discuss.

FORT ANCIENT EARTHWORKS AND NATURE PRESERVE



Sitting above the Little Miami River, this 126-acre site is North America's largest ancient hilltop enclosure, with earthen embankments creating wall-like structures along the contours of the land. Fort Ancient was not a defensive fort, but a place where Early Native Americans gathered for celebrations and community. Fort Ancient has a museum and three miles of hiking trails. A seasonal garden behind the museum showcases crops cultivated 2,000 to 1,000 years ago.

Warren County Convention & Visitors Bureau

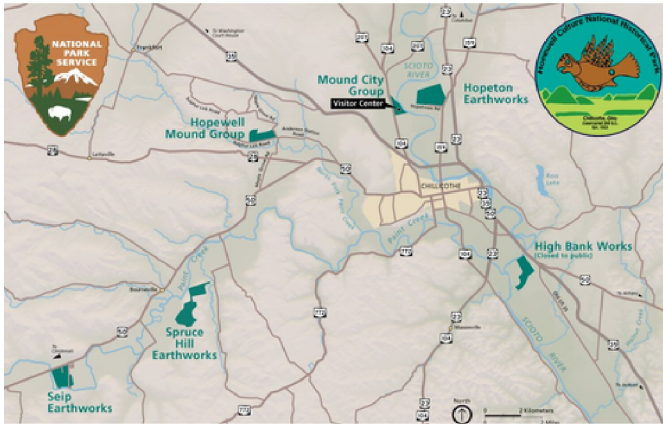
ohioslargestplayground.com / 800.791.4FUN
(4386) or 513.204.1900

WHERE CAN I FIND NEARBY RESTAURANTS, HOTELS AND THINGS TO DO?



Address	6123 State Route 350, Oregonia - Located about three miles off I-71. This is close to Lebanon, Ohio.
Distance from other World Heritage Sites and Major Cities	From Newark, approximately 1.6 hours / From Mound City Group at Hopewell Culture National Historical Park in Chillicothe, approximately one hour / From Columbus, approximately one hour / From Cincinnati, approximately 30 minutes
Contact Information	Phone: 513.932.4421 or 800.283.8904 Website: www.ohiohistory.org/fortancient
Hours of Operation	Hours vary pending time of year. Final admission is generally one hour prior to closing. Recommend calling to verify hours on day of a guest's visit. <ul style="list-style-type: none"> December through March: Grounds only are open Wednesdays and Thursdays, 10 a.m. to 5 p.m. December through March: Museum and grounds open Friday and Saturday from 10 a.m. to 5 p.m. and on Sundays, noon to 5 p.m. April through November: Museum and grounds open Wednesday through Saturday, 10 a.m. to 5 p.m. and Sunday, noon to 5 p.m. Guided tours are available at 2 p.m. during museum operating hours Museum and grounds may close during inclement weather
Parking	Parking is available next to the visitors center/museum. A large parking area is also available at the opposite side of the park. Parking is plentiful alongside the road traveling through the park.
Admission Fee	Adults - \$7; Seniors 60+- \$6; Children 6-17 - \$6. Grounds only - \$8 per vehicle
Visitor Center	Yes, with museum and gift shop
Restrooms	Yes, in visitors center/museum during operational hours. Pit latrines are also available at opposite side of the park near the picnic shelter.
Pets	Yes, on leash. Only service animals permitted in museum.
Picnic Tables / Shelters	Yes, picnic tables and shelter
Trails	Five trails of varying difficulty and length (.25 miles to one mile) lead to overlooks and features. Fort Ancient also links to the 60-mile Little Miami Scenic Bike Trail. Recommend visitors pick up a <i>Hiking & Trail Guide</i> from the visitors center.

HOPEWELL CULTURE NATIONAL HISTORICAL PARK (5 SITES)



ARE THE FIVE EARTHWORK SITES MANAGED BY HOPEWELL CULTURE NATIONAL HISTORICAL PARK LOCATED AT SAME PROPERTY?

No. They are at different locations surrounding Chillicothe. Visitors should be instructed to visit the Mound City Group first to pick up a map to the other sites. From the visitors center at Mound City Group to Seip Earthworks (the farthest away) is approximately a 15-minute drive.

WHERE CAN I FIND NEARBY RESTAURANTS, HOTELS AND THINGS TO DO?



Ross-Chillicothe Convention & Visitors Bureau
visitchillicotheohio.com / 740.702.7677

MOUND CITY GROUP - HOPEWELL CULTURE NATIONAL HISTORICAL PARK



This is the recommended starting point for visitors at Hopewell Culture National Historical Park. It has a staffed visitors center and a small museum (temporarily closed as of September 2023). Mound City Group is a restored collection of ancient burial mounds. A low earthen wall surrounds an area about the size of 10 football fields, creating a square-like border for 25 burial mounds.

Address	16062 State Route 104, Chillicothe
Distance from other World Heritage Sites and Major Cities	From Newark, approximately 1.25 hours / From Fort Ancient, approximately one hour From Columbus, approximately 50 minutes / From Cincinnati, approximately 1.5 hours
Contact Information	Phone: 740.774.1126 / Website: www.nps.gov/hocu
Hours of Operation	Visitors center is open daily, 9 a.m. to 5 p.m. Grounds open dawn to dusk. Closed Thanksgiving Day, Christmas Day and New Year's Day
Parking	Parking is located on-site and includes the ability to park RVs and larger vehicles pending the number of other vehicles visiting at the time.
Admission Fee	Free
Visitor Center	Yes, with gift shop. Interesting film is played on demand, so tell visitors to ask park rangers.
Restrooms	Yes, in visitors center
Pets	Yes, on leash only. Not permitted in visitors center.
Picnic Tables / Shelters	Picnic tables are available. No shelters.
Trails	1.5-mile trail encircles the earthworks and has views of the Scioto River. The trailhead is to the left of the visitors center and is unmarked. Trail is partially gravel and grass. One all-terrain wheelchair is available on a first come, first serve basis during visitor center hours.

HOPEWELL MOUND GROUP - HOPEWELL CULTURE NATIONAL HISTORICAL PARK



Thought to have been the largest earthworks configuration ever created by Early Native Americans during what we now call the Hopewell culture, there are only a few earthwork remnants visible to the untrained eye. A self-guided interpretive trail is available and is 2.5 miles long.

Visitors are recommended to start at Mound City Group of the Hopewell Culture National Historical Park (page 5) for maps and directions to other sites, including Hopewell Mound Group.

WHERE CAN I FIND NEARBY RESTAURANTS, HOTELS AND THINGS TO DO?



Ross-Chillicothe Convention & Visitors Bureau
visitchillicotheohio.com / 740.702.7677

Address	4731 Sulphur Lick Rd, Chillicothe
Distance from other World Heritage Sites and Major Cities	From Newark, approximately 1.25 hours / From Fort Ancient, approximately one hour From Columbus, approximately 50 minutes / From Cincinnati, approximately 1.5 hours
Contact Information	Telephone: 740.774.1126 / Website: www.nps.gov/hocu
Hours of Operation	Grounds open dawn to dusk.
Parking	The parking lot is located off Sulphur Lick Road, just west of Maple Grove Road and the North Fork Creek. Watch for the parking lot, as there is no signage at the lot's entrance. Several RV spots available.
Admission Fee	Free
Visitor Center	No, and site has no staffing
Restrooms	Yes
Pets	Yes, on leash only
Picnic Tables / Shelters	Picnic tables and a shelter are available.
Trails	The trail to the site is located to the right of the restrooms toward the back of the parking lot. There is a 2.5-mile trail at the site, which is largely gravel and grass. The beginning portion of the trail is paved and leads to an overlook spot where visitors can get a sense of the enormity of the site and choose to continue on the trail or through a grass trail deeper into the site. The Tri-County Triangle Trail, a paved bike trail runs through the earthworks site and travels more than 30 miles between Chillicothe and Washington Courthouse.



A National Park Service app is available on Apple App Store and Google Play

SEIP EARTHWORKS - HOPEWELL CULTURE NATIONAL HISTORICAL PARK



The huge loaf-shaped mound is one of the largest Hopewell mounds. It covers an area about as large as 75 tennis courts and is as tall as a 3-story building. Visitors can see the reconstructed mound and a portion of a reconstructed wall that once formed the earthwork complex. Another portion of original wall and a view of the mound from across the land can be found off Dill Road.

Visitors are recommended to start at Mound City Group of the Hopewell Culture National Historical Park (page 5) for maps and directions to other sites, including Seip Earthworks.

WHERE CAN I FIND NEARBY RESTAURANTS, HOTELS AND THINGS TO DO?



Ross-Chillicothe Convention & Visitors Bureau
visitchillicotheohio.com / 740.702.7677

Address	7058 US-50 Scenic, Bainbridge. Located about 15 miles southwest of the Mound City Group.
Distance from other World Heritage Sites and Major Cities	From Newark, approximately 1.75 hours / From Fort Ancient, approximately 1.2 hours From Columbus, approximately 1.2 hours / From Cincinnati, approximately 1.5 hours
Contact Information	Telephone: 740.774.1126 / Website: www.nps.gov/hocu
Hours of Operation	Grounds open dawn to dusk.
Parking	A small parking area is at the front of the site, off U.S. Route 50. RV parking will be dependent on number of visitors at the site.
Admission Fee	Free
Visitor Center	No, and site has no staffing
Restrooms	No
Pets	Yes, on leash only
Picnic Tables / Shelters	Picnic tables and a shelter are available.
Trails	Visitors walk across grass to the mound and follow a mowed grass trail with interpretive signage. There is a an additional 1.2-mile trail from the mound to Paint Creek.



A National Park Service app is available on Apple App Store and Google Play

HOPETON EARTHWORKS - HOPEWELL CULTURE NATIONAL HISTORICAL PARK



Much of the original earthworks has been destroyed; however, the National Park Service uses interpretive mowing to show where walls once stood. An overlook provides an overall view of the entire site and gives visitors an idea of the enormity of this earthwork. Access to the overlook requires hiking on a trail.

Visitors are recommended to start at Mound City Group of the Hopewell Culture National Historical Park (page 5) for maps and directions to other sites, including Hopeton Earthworks.

WHERE CAN I FIND NEARBY RESTAURANTS, HOTELS AND THINGS TO DO?



Ross-Chillicothe Convention & Visitors Bureau
visit Chillicotheohio.com / 740.702.7677

Address	990 Hopetown Rd, Chillicothe. Located about one mile east of the Mound City Group, with a drive-time of approximately eight minutes.
Distance from other World Heritage Sites and Major Cities	From Newark, approximately 1.5 hours / From Fort Ancient, approximately 1.1 hours From Columbus, approximately 50 minutes / From Cincinnati, approximately 1.75 hours
Contact Information	Telephone: 740.774.1126 / Website: www.nps.gov/hocu
Hours of Operation	Grounds open dawn to dusk.
Parking	The parking area is located on Hopetown Road, about 1/3 mile west of North Bridge Street (S.R. 159). Ability to park RVs will vary pending on number of cars in lot. There is no sign at the parking lot entrance. There is a short gravel travel leading from the parking lot to the trailhead.
Admission Fee	Free
Visitor Center	No, and site has no staffing
Restrooms	No
Pets	Yes, on leash only
Picnic Tables / Shelters	Picnic tables, no shelter
Trails	There is a trail to the right before you reach the open field. Watch carefully, as it is not marked. Additional trails have been mowed into the fields. These lead to the earthwork complex, but be sure to bring a map or use the NPS app, as it's difficult to identify where you are at the complex from the ground.



A National Park Service app is available on Apple App Store and Google Play

NEWARK EARTHWORKS STATE MEMORIAL (THE GREAT CIRCLE) AT NEWARK EARTHWORKS



Most earthworks were destroyed through farming and construction, and others are reconstructed following excavation. The authenticity of both sites of the Newark Earthworks is remarkable. There is a visitors center and museum on-site and guided tours are available as scheduled. Note: Hours at visitors center are limited.

Visitors are recommended to begin visits to both Newark Earthwork sites at the Great Circle.

WHERE CAN I FIND NEARBY RESTAURANTS, HOTELS AND THINGS TO DO?



Explore Licking County
explorelc.org / 740.345.8224

Address	455 Hebron Rd., Heath Additional Directions: Located about a 6-minute drive from the Octagon Earthworks, also part of the Newark Earthworks group.
Distance from other World Heritage Sites and Major Cities	From Mound City at Hopewell Culture National Historic Park in Chillicothe, approximately 1.2 hours From Fort Ancient, approximately 1.75 hours / From Columbus, approximately 40 minutes From Cincinnati, approximately 2.25 hours
Contact Information	Telephone: 740.334.0498 Website: ohiohistory.org/visit/browse-historical-sites/newark-earthworks
Hours of Operation	Grounds open dawn to dusk. Visitors center and museum is open April through October, Thursday through Saturday, 10 a.m. to 4 p.m.
Parking	The main parking lot is located off Hebron Road. There is a paved walkway to the visitors center and the gateway to the Great Circle. Two additional parking lots are off Cooper Avenue, including one which is closes to the picnic shelters.
Admission Fee	Free
Visitor Center	Open April through October, Thursday through Saturday, 10 a.m. to 4 p.m. Not handicap accessible.
Restrooms	Yes, during visitor center hours
Pets	Yes, on leash only
Picnic Tables / Shelters	Picnic tables, shelter available
Trails	There is a short paved trail encircling a large portion of the Great Circle. Visitors can walk on grass through the interior of the Great Circle.

OCTAGON EARTHWORKS AT NEWARK EARTHWORKS



At present, the Octagon Earthworks is the site of the Moundbuilders Country Club golf course. Public areas of the Octagon Earthworks include the interpretive signs near the parking lot, a viewing platform and a path behind the clubhouse. Although access is limited, the view from the platform and even from the parking lot is impressive.

Visitors are recommended to begin visits to both Newark Earthwork sites at the Great Circle.

WHERE CAN I FIND NEARBY RESTAURANTS, HOTELS AND THINGS TO DO?



Explore Licking County
explorelc.org / 740.345.8224

Address	125 N. 33rd St., Newark Additional Directions: This site is on land managed by the Moundbuilders Country Club. Plug in address to navigation systems versus the name of the site, as directions may be inaccurate.
Distance from other World Heritage Sites and Major Cities	From Mound City at Hopewell Culture National Historic Park in Chillicothe, approximately 1.2 hours From Fort Ancient, approximately 1.75 hours / From Columbus, approximately 40 minutes From Cincinnati, approximately 2.25 hours
Contact Information	Telephone: 740.334.0498 Website: ohiohistory.org/visit/browse-historical-sites/newark-earthworks
Hours of Operation	Grounds open dawn to dusk.
Parking	The site shares a parking lot with the Moundbuilders Country Club. Park closest to the Ohio History Connection's Octagon interpretive signage.
Admission Fee	Free
Visitor Center	No. Notify visitors to start at The Great Circle, as this site has a visitors center (check first, as this center has limited hours). The Octagon is not staffed.
Restrooms	No. Use of Moundbuilders Country Club facilities is prohibited.
Pets	No
Picnic Tables / Shelters	No
Trails	Visitors walk on grass to the observation platform that has approximately a dozen stairsteps. There is a walking path to view the Observatory Mound. Look for the small sign off the parking lot between the clubhouse and the platform. However, the paved pathway doesn't begin until you walk behind the clubhouse. Do not cross over the mound to the golf course paths. You'll find the paved path begins close to the pool area.

"INDIGENOUS WONDERS OF THE WORLD" EXHIBIT AT OHIO HISTORY CENTER



For those exploring the Hopewell Ceremonial Earthwork sites, they may want to visit the Ohio History Center's special exhibit - "Indigenous Cultures of the World." This exhibit tells the story of the eight World Heritage-nominated sites. In this interactive exhibit, visitors learn how Early Native Americans employed astronomy and geometry to align the earthworks with cycles of the sun and moon. View authentic 2,000-year-old artifacts.

WHERE CAN I FIND NEARBY RESTAURANTS, HOTELS AND THINGS TO DO?



Experience Columbus

experiencecolumbus.com/ 800-354-2657

Address	800 E 17th Ave, Columbus Additional directions: Located at the intersection of I-71 and 17th Avenue (Exit 111).
Distance from other World Heritage Sites and Major Cities	From Mound City at Hopewell Culture National Historic Park in Chillicothe, approximately 1 hour From Fort Ancient, approximately 1.25 hours / From Newark Earthworks, approximately 40 minutes / From Cincinnati, approximately 1.75 hours
Contact Information	Telephone: 800.686.6124 Website: ohiohistory.org The Ohio History Center is managed by Ohio History Connection
Hours of Operation	Wednesday through Sunday, 10 a.m. to 5 p.m.
Parking	Ample parking is available
Admission Fee	\$16/Adult \$14/age 60+ or college student with ID \$10/ages 4-12 Free/age 3 & under and Ohio History Connection members
Restrooms	Yes
Pets	Service animals only
Picnic Tables / Shelters	No
Trails	Not applicable